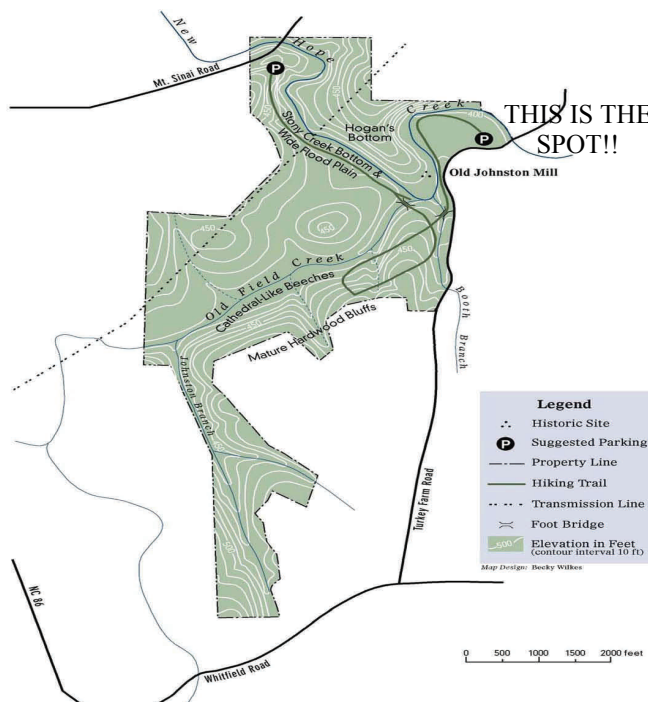


# Day Hike with Troop 9

- Who:** BOYS INTERESTED IN JOINING A SCOUT TROOP. COME WITH OR WITHOUT YOUR CUB SCOUT DEN (DENS ARE ENCOURAGED, BUT COME ANYWAY!)
- What:** HAVE FUN WITH BOY SCOUTS! WEBELOS SCOUTS MAY FULFILL ARROW OF LIGHT REQUIREMENTS 4(B), 5 AND 6 (CHECK WITH YOUR DEN LEADER)
- Where:** JOHNSON'S MILL NATURE PRESERVE - TURKEY FARM ROAD PARKING AREA
- When:** SUNDAY, JANUARY 31, 2010 STARTING AT 1:30pm UNTIL ABOUT 3:30pm
- Why:** LEARN ALL ABOUT TROOP 9 AND THE BOY SCOUTING PROGRAM
- How:** from Chapel Hill - GO NORTH ON NC 86 (MARTIN LUTHER KING JR BLVD/ AIRPORT RD). CROSS OVER I-40 (EXIT 266) AND TURN RIGHT ON WHITFIELD RD. TURN LEFT ON TURKEY FARM RD. AND CONTINUE ABOUT 1.1 MILES. THE PARKING AREA IS ON YOUR LEFT, JUST BEFORE MT SINAI RD.
- Bring:** SCOUT SPIRIT! A PARENT OR GUARDIAN. WATER BOTTLE. DRESS FOR CURRENT WEATHER CONDITIONS. STURDY FOOTWEAR. WEBELOS BOOK.



For information about Troop 9, please contact Scoutmaster Gregg Gerdau at [sm@t9ch.org](mailto:sm@t9ch.org) or call 919-593-0037

Since 1910  
[www.t9ch.org](http://www.t9ch.org)

Boy Scouts of America  
Troop 9  
The Chapel of the Cross  
304 East Franklin Street  
Chapel Hill, NC 27514

